

ARCHITECT: GUNTHER MOTZ
8821 ASHCROFT AVE.
WEST HOLLYWOOD, CA. 90048
310-859-8920

STRUCTURAL ENGINEER: PINA STRUCTURAL ENGINEERING
1983 W. 190 TH ST SUITE 200
TORRANCE, CA. 90504
310-516-9300

GEOLOGY: IRVINE GEOTECHNICAL INC.
145 N. SIERRA MADRE BLVD. # 12
PASADENA, CA. 91107
626-844-6641

ADDRESS: 217 MC CADDEN PL. LOS ANGELES, CA. 90004

LEGAL DESCRIPTION

TRACT: TR 8320
BLOCK: _____
LOT: 72
ARB: NO
MODIFIER: NO
PIN NUMBER: 138 B 185 477
APN: 55130280020
ZONING: RE 9-1-HPOZ
ZONING INFORMATION (ZI): ZI-2391 BASELINE MANSIONIZATION

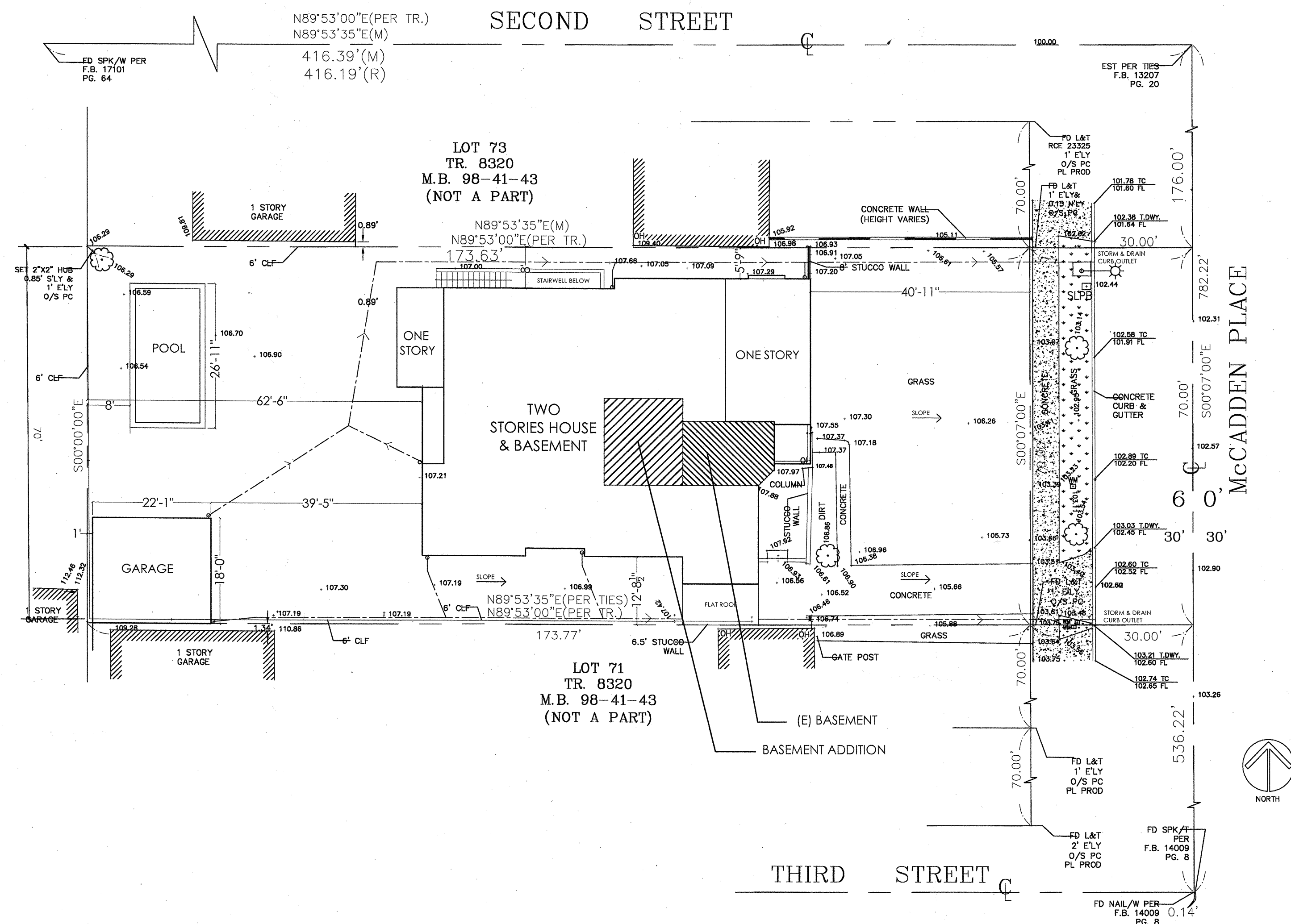
OCCUPANCY GROUP(S): R-3
USE GROUP(S): SINGLE FAMILY RESIDENCE
TYPE OF CONSTRUCTION: TYPE V
NUMBER STORY(S): 2 STORIES + BASEMENT
LOT SIZE: 70' X 173.63'
LOT AREA: 12,171.7 SQ.FT.
HEIGHT: 22'-8"

ZONING SQ. FT. SUMMARY			
LOT AREA : 12,171.7 SQ.FT.			
	EXISTING	ADDITION (REVISED)	TOTAL
BASEMENT	179 SQ.FT.	1,461 SQ.FT. + (224 SQ.FT.)	1,864 SQ.FT.
GARAGE		387 SQ.FT.	387 SQ.FT.
DETACHED ACCESSORY BLDG			
COVERED PORCHES			46 SQ.FT.
FIRST FLOOR	1,737 SQ.FT.	1,608 SQ.FT.	3,345 SQ.FT.
SECOND FLOOR	1,171 SQ.FT.	1,326 SQ.FT.	2,497 SQ.FT.
RESIDENTIAL GRAND TOTAL	2,908 SQ.FT.	2,934 SQ.FT.	5,842 SQ.FT.

GROSS SQ. FT. SUMMARY			
	EXISTING	ADDITION (REVISED)	TOTAL
BASEMENT	214 SQ.FT.	1,572 SQ.FT. + (241 SQ.FT.)	2,014 SQ.FT.
GARAGE		414 SQ.FT.	414 SQ.FT.
DETACHED ACCESSORY BLDG			
FIRST FLOOR	1,803 SQ.FT.	1,687 SQ.FT.	3,490 SQ.FT.
SECOND FLOOR	1,238 SQ.FT.	1,398 SQ.FT.	2,636 SQ.FT.
RESIDENTIAL GRAND TOTAL	3,041 SQ.FT.	5,071 SQ.FT.	8,112 SQ.FT.

	APPROVED	REVISED
R3 OCCUPANCY	911 SQ.FT.	
U OCCUPANCY	550 SQ.FT.	207 SQ.FT.

REFER TO ORIGINAL PERMIT # 110140 -10000 - 02877



PROPOSED PLOT PLAN
1/16"=1'-0"

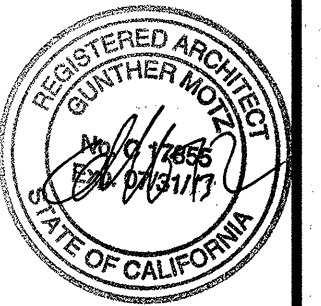
HERE PLANS HAVE BEEN REVIEWED BY IRVINE
GEOTECHNICAL AND CONFORM TO THE
CITY OF LOS ANGELES REQUIREMENTS
DATE: 11/14/08
BY: [Signature]

MIZRAHI
RESIDENCE

217 MC CADDEN PL.
LOS ANGELES CA - 90004

MOTZ
ARCHITECT

8821 ASHCROFT AVE
WEST HOLLYWOOD
CALIFORNIA 90048
310 - 859 - 8920
310 - 273 - 6359 FAX



EXISTING & PROPOSED PLOT PLAN

DATE: 5/25/12

SCALE: 1/16"=1'-0"

A-0